

NetHAM nano

The monitoring service on cloud

Network Technology Lab
NECTEC



NetHAM
สายลับจับเน็ตล้น

Panita Pongpaibool
Chavee Issariyapat

nano@netham.in.th

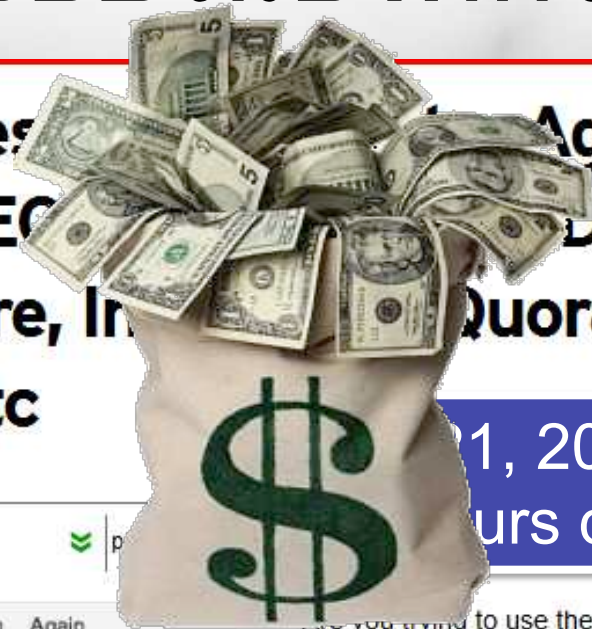
ปัญหา IT ที่พบบ่อยในองค์กร

1. Site outage
2. Slow Internet

Loss to business

- Sale
- Customers
- Reputation
- Productivity

Down Goes Amazon EC2 Again.
Amazon EC2 Down
Foursquare, In, Quora,
Reddit, Etc



1, 2011
hours down time



MG SIEGLER

TC Tip Amazon ec2 is down... Again

TC Tip AWS outage

TC Tip EngineYard is down...

TC Tip Amazon EC2 down ag

TC Tip #AWS goes down alo

TC Tip AWS Down!

If this sounds familiar, it's b
has been going on for ab

ธุรกิจ E-commerce

(โรงแรม ท่องเที่ยว บริการ อื่นๆ)

สูญเสียรายได้

33 ล้านบาท/ชม.

tips in the last few
all of Twitter, Amazon's
e down. That means
ku, Foursquare,
urntable.fm, Netflix and
own.

it looks like the outage

Update: It looks like the outage may be isolated to EAST-1, so not all of EC2. Still, all of the companies above and hundreds of others are clearly affected right now.

Software-based monitoring

- ต้องลงโปรแกรม
- ไม่เห็นความผิดปกติ
- แจ้งเตือนไม่ทัน



user

Cloud-based monitoring (Software-as-a Service)

- ไม่ต้องลงโปรแกรม
- พบทุกความผิดปกติ
- ไม่พลาดการแจ้งเตือน
- ดูแลได้จากหลายจุด



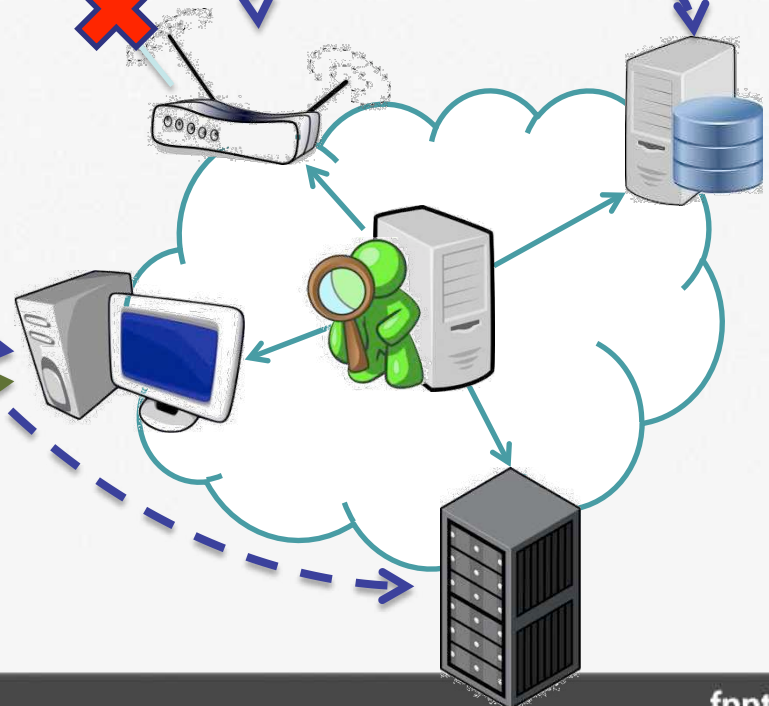
admin



NetHAM
Nano

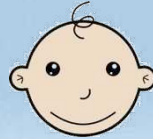


NetHAM
Nano



Why NetHAM Nano?

Very simple



Anyone can use

No software



No headaches

No hardware



Big savings

Cloud-based



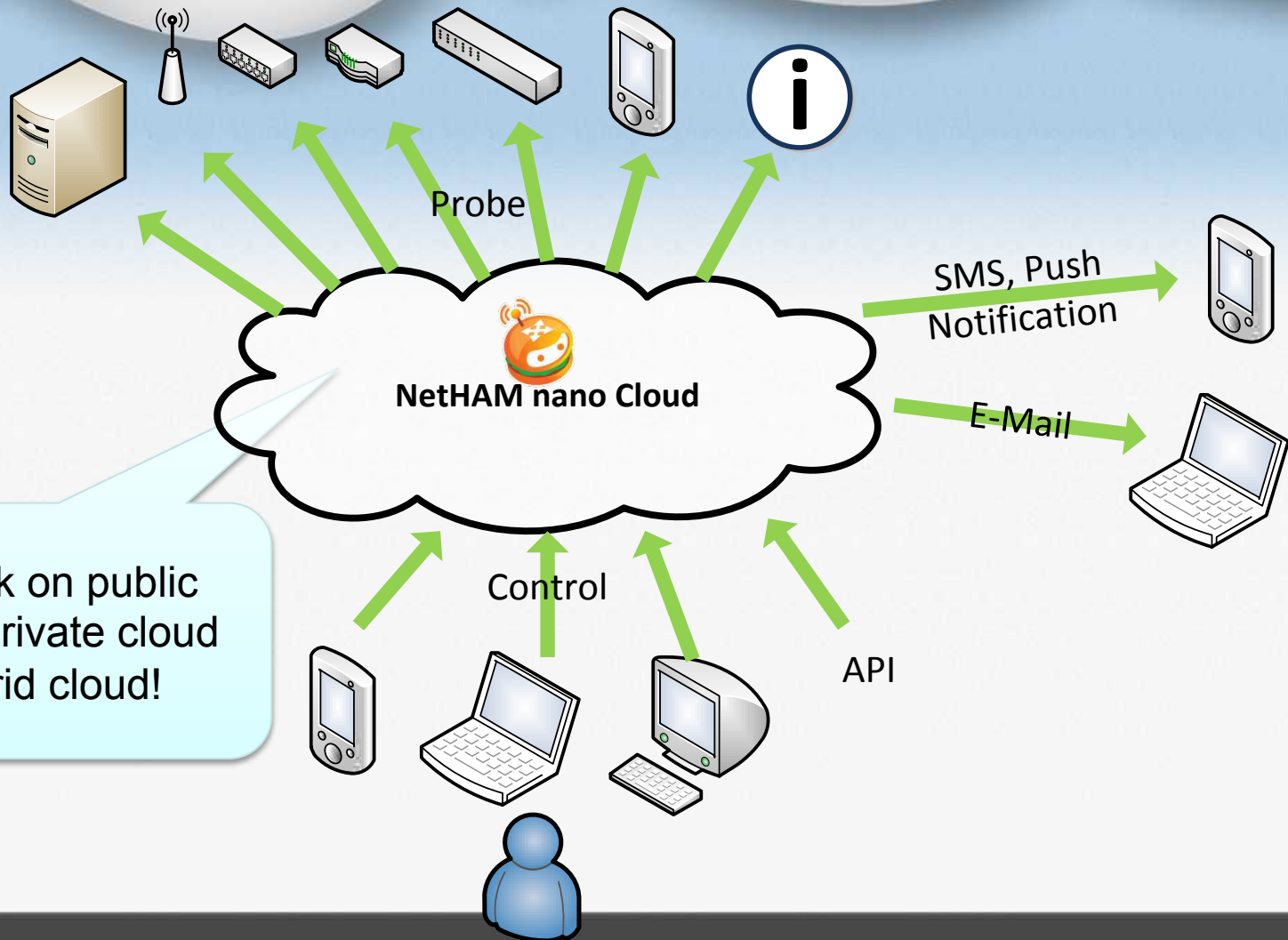
Zero downtime

Award-winning*

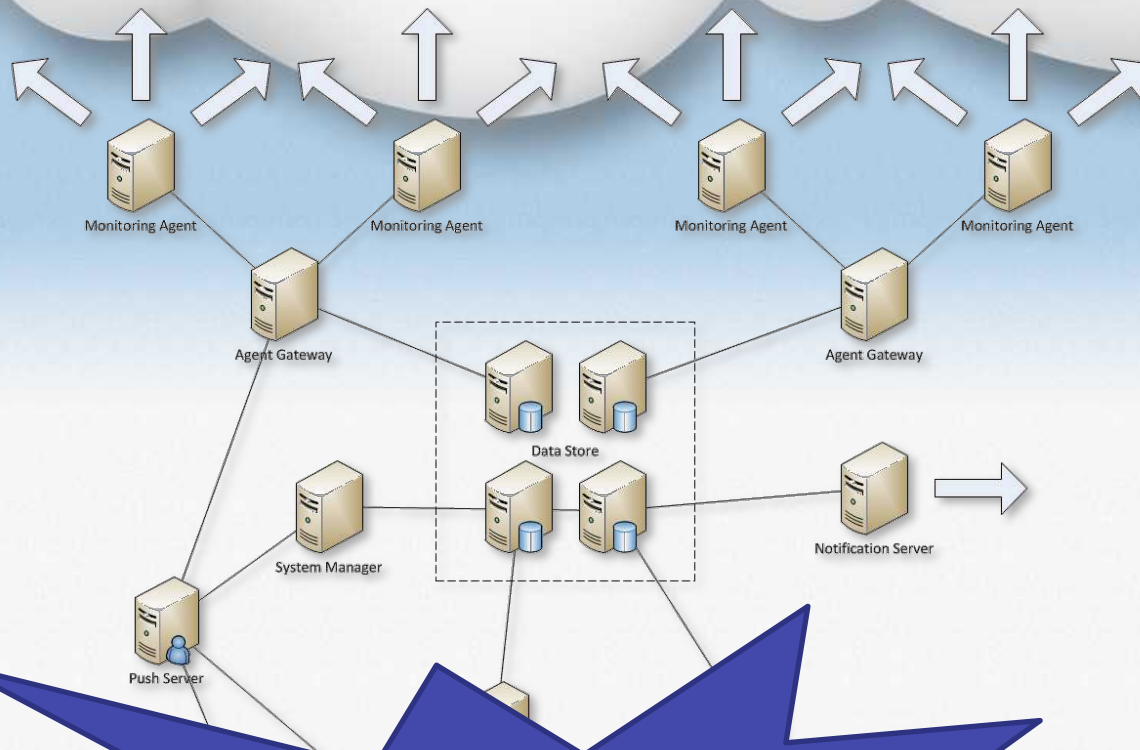


Proven technology

Logical Architecture



Inside the Cloud



System Components

- Data store
- Agent
- Agent gateway
- Notification node
- Manager
- Event Pusher
- Front end node

- More to come e.g. Analyzer, Aggregator

Redundancy → Fault tolerant
Load distribution → Scalable
on every level



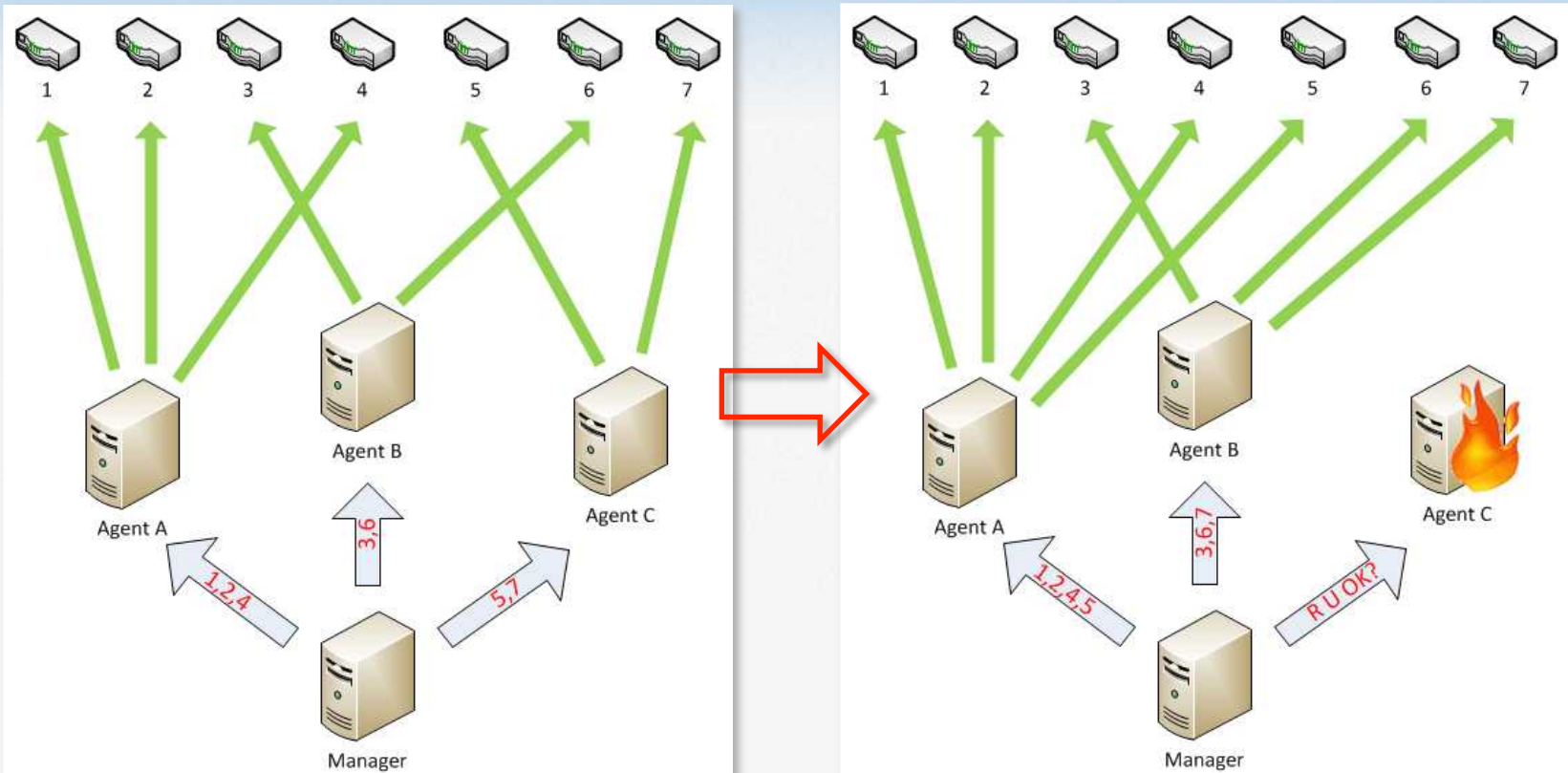
Agent

Things agent must do

- Configurable scheduling daemon.
- Must works behind NAT.
- Flexible enough to extend the functionalities.

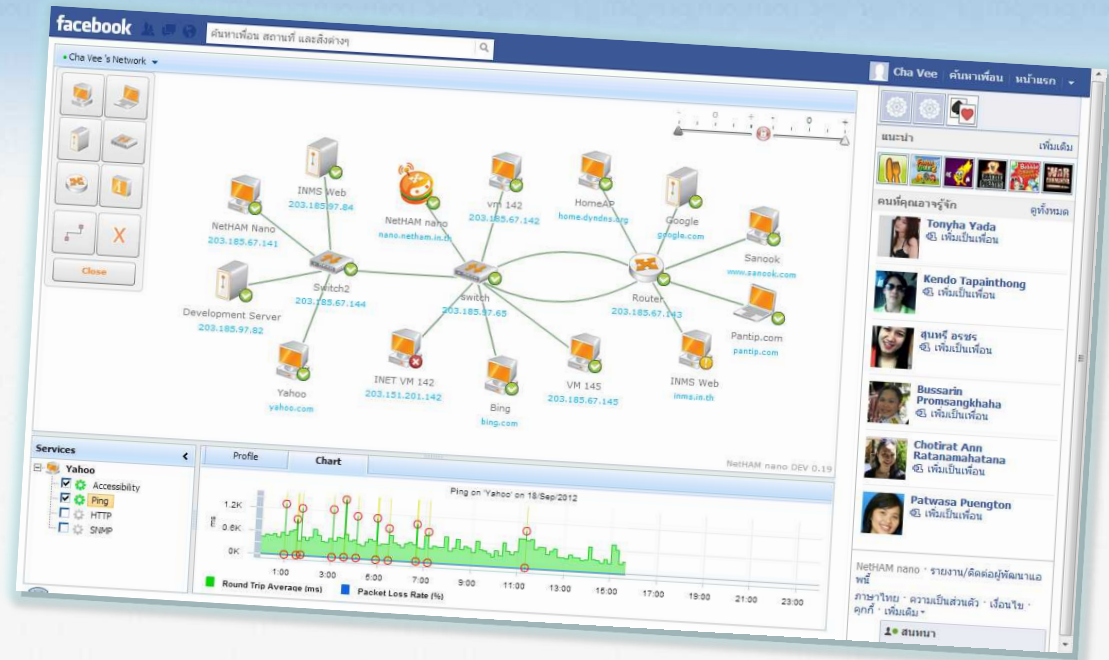
Failover Mechanism

- Monitor jobs and distribute them among agents



NetHAM nano Front End

- SSL web integrate with Facebook Application Platform.
- Real-time status update via the push engine.
- Hassle-free user interface.



<https://apps.facebook.com/nethamnano>

Project Status

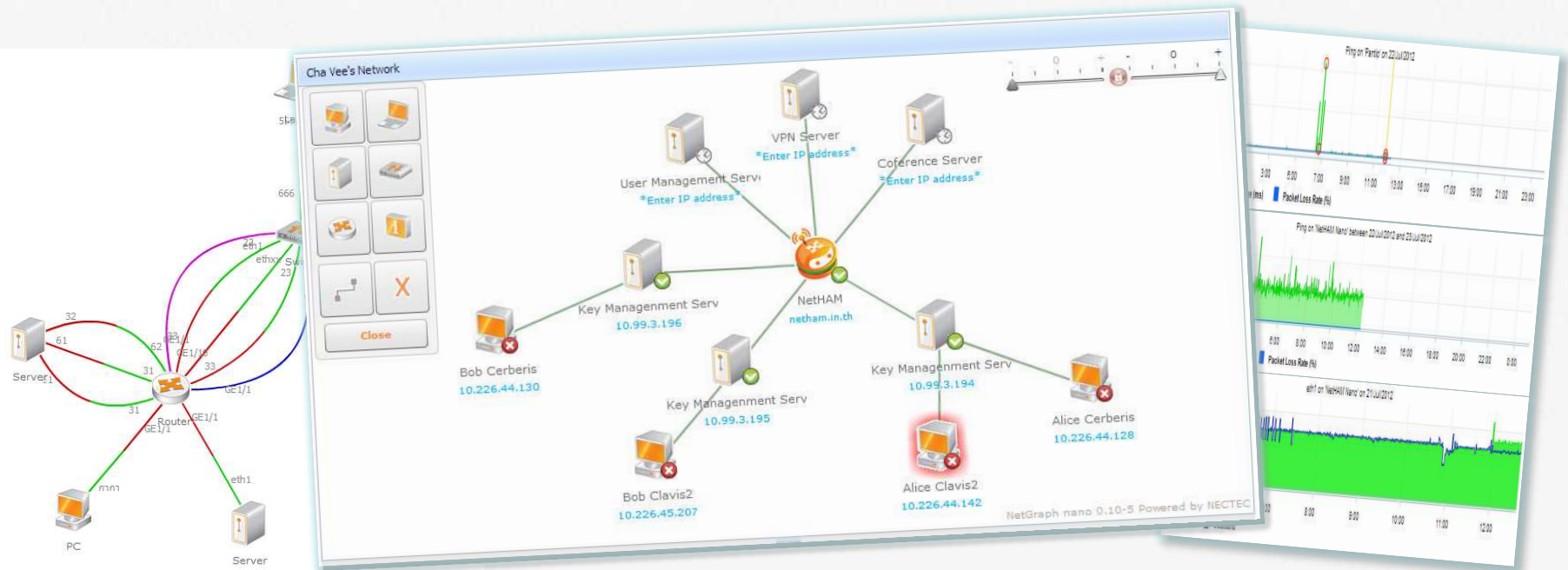
- 75% done.
- Scheduled to be available at the end of 2012.
- Become testers (need an invitation code) at <http://apps.facebook.com/nethamnano>
- Looking for more places to deploy nodes.

Looking for Co-Creation

- Deploy nodes to support multiple-point monitoring from different regions/countries.
- Innovative applications e.g.
 - home monitoring
 - location-based service
 - specific information retrieval for end users e.g. weather, disaster report etc.

Some use cases : Network monitoring system

- To monitor network devices such as switches, routers, servers.
- To monitor remote service e.g. PING,HTTP,SNMP (more to be added)
- Support distributed monitoring via multiple agents.
- Suitable for small networks, small offices, websites etc.



Some use cases : Home applications

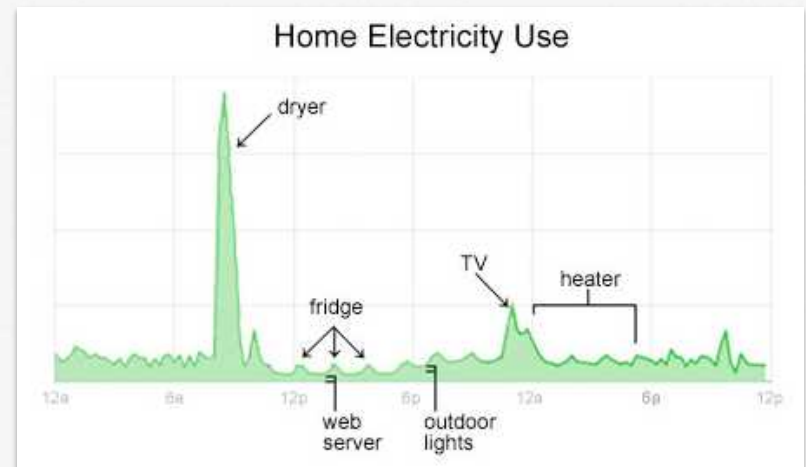
- NetHAM nano can be used to monitor home networks via usual ADSL modems.
- By doing a port forwarding, NetHAM nano could answer these questions :



Some use cases :

Smart energy

- By using a smart meter, it is possible to monitor home electricity consumption the same way as Google Powermeter does.
- Monthly electric bill can be predicted.
- Alerts when there's anything wrong with the electric usage patterns.



Some use cases :

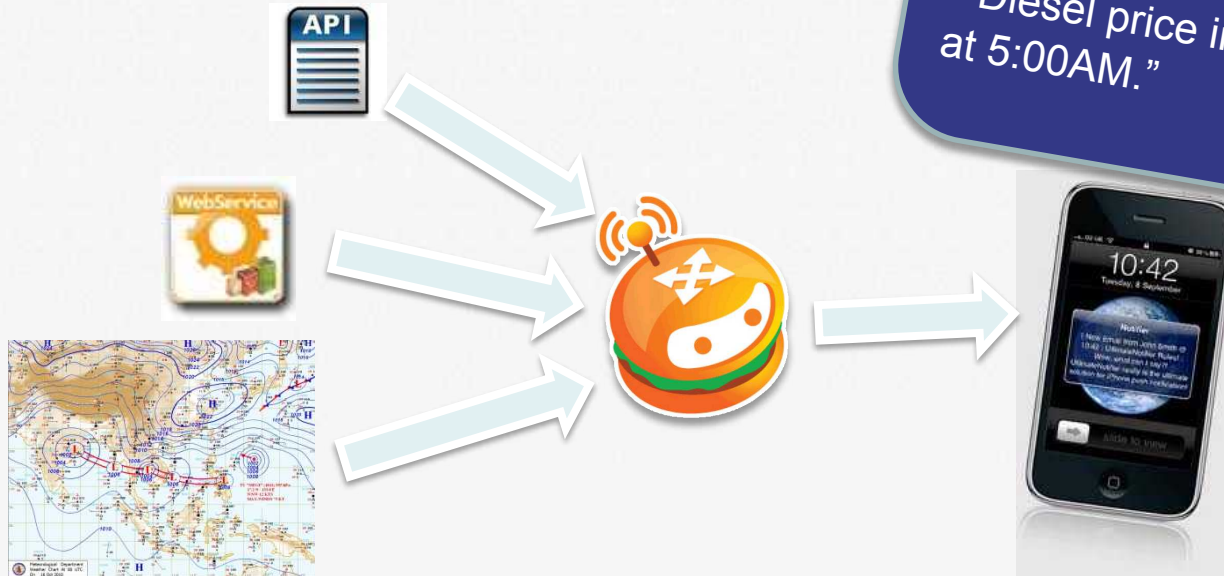
Mobile applications

- By imitating the standard NetHAM nano agent, we can have a compact agent run on mobile phones and tablets.
- In stead of checking the remote services, a compact agent checks their sensors.
- NetHAM nano can track device's position, speed, acceleration etc and display on the current UI with a map view.



Some use cases : Information monitoring

NetHAM nano can gather information from several sources and notify users according to their current locations.



NetHAM nano

- "It's going to rain in half an hour!"
- "Leave soon if you don't want to be caught in a traffic jam."
- "Diesel price increases tomorrow at 5:00AM."

Brainstorming Questions

- Would you be interested in co-creating NetHAM Nano?
What role?
 - Tester? Deploying agents? Cloud infra provider? Developer?
- Which areas do you think NetHAM Nano can help with your business?
- Key success factors or risk factors
- Contact nano@netham.in.th



NetHAM
สายลับฉบับเน็ตล้น