

Color Tutorial Topics

What is encoded 'in' image code values?

...Image state explained

When to encode for print?

...Early binding vs. late binding workflows

Why doesn't "perfect" math always yield a usable profile or desirable imaging result?

...Color processing computational quality

How are white point, black point, and gamut extent rendered or re-rendered?

...Essentials of color management

Color preference vs. color matching?

...Building rendering intent transforms

Re-rendering to another output?

...Device to device profile construction for interoperability



Understand how to take and preserve great photos!

Give and take:

"From the trenches" expert user Q&A:

Color managed use case examples from creative and prepress workflows

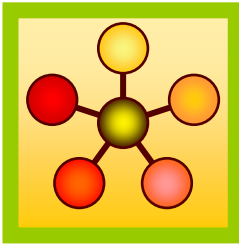
Audience recommendations on future directions for color management

Wine & Cheese Networking Event:

Products and Applications — Industry

Color Management Demonstrations

See You There!!!



Ms. Jane Smith
999 Standards Way
Cooperativeville, UN 00000

Mr. K.D. Sang
333 Good Fortune Avenue
Exploration Point, UN 11111

Dear Mr. Sang,

International Standards and their development process support:

- facilitation of global trade,
- improvement of quality, safety security, environmental and consumer protection, as well as the rational use of natural resources,
- global dissemination of technologies and good practices,

all of which contribute to economic and social progress.

Through the network and collaboration of national member bodies, international liaisons, industry consortia, and dedicated experts, the international standards bodies constitute a leading platform for the production of global, market relevant international standards.

The consensus-building mechanisms employed in the development of these international standards are recognized and relied upon by industry, public authorities, consumers, and other stakeholders, thus helping to accomplish the aim of “one standard, one test, and one conformity assessment procedure accepted everywhere.”

In this way, international standards organizations and their standards products contribute to a more efficient and sustainable world economy.

Sincerely,

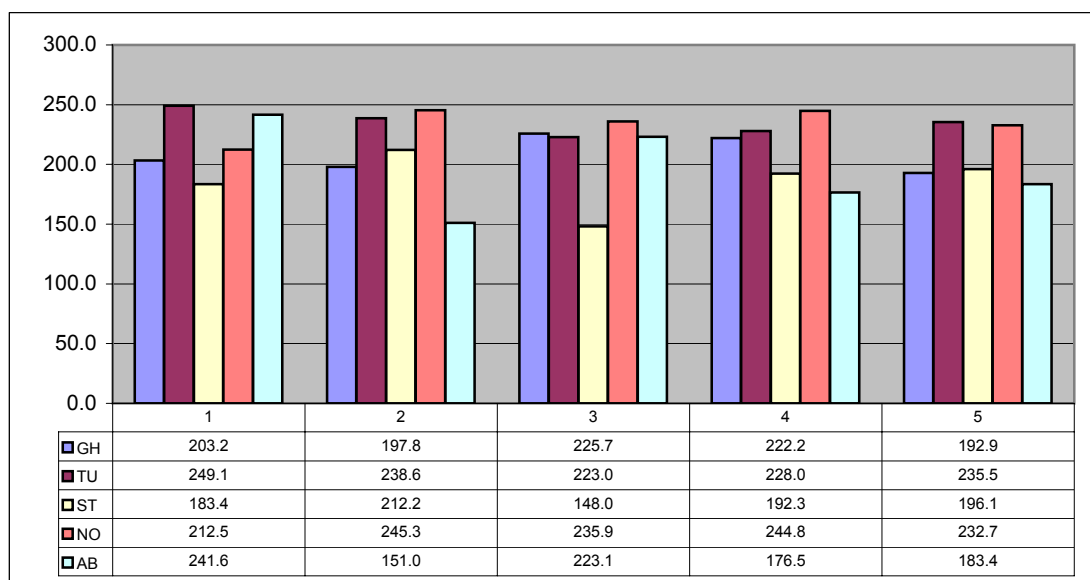
Jane Smith

Summary Sheet Version 3.2

Intermediate Results

Final Report finished by time of final reporting.

	EU	NA/SA	LA	Asia	AF/AU	EUE	NW	SW	ME	SE	MW	IST
First	99.0	17.6	51.9	112.2	142.9	10.4	199.1	6.6	173.0	178.0	153.4	124.5
Second	153.2	147.8	126.6	143.6	121.4	138.4	50.9	188.6	139.0	45.5	32.3	133.4
	Y	M	T	Z	O	I	R	Q	L	C	P	G
Third	32.5	57.3	175.7	91.4	84.0	56.6	163.1	67.5	85.4	53.5	185.5	29.0
Fourth	46.7	93.7	24.2	172.2	47.9	132.6	26.7	128.9	163.1	103.9	162.3	55.6
Estimate:	203.2	197.8	225.7	222.2	192.9	188.4	249.1	238.6	223.0	228.0	235.5	183.4



	EU	NA/SA	LA	Asia	AF/AU	EUE	NW	SW	ME	SE	MW	IST
Ein	158.5	98.0	84.8	146.1	186.0	114.9	20.9	168.6	155.8	174.7	191.6	35.0
	P	G	T	O	Z	I	R	Q	L	C	Y	M
Zwei	88.1	12.1	69.5	119.6	99.2	162.5	90.6	106.2	194.8	79.6	160.5	31.0
Drie	79.7	6.0	93.8	13.6	178.5	33.5	195.3	32.6	75.6	136.3	43.2	15.2
	I	R	O	T	Z	P	G	C	L	Q	M	Y
Funf	162.2	67.9	142.3	117.5	31.1	73.1	156.0	38.8	47.4	182.7	25.9	74.6
Vier	34.5	79.3	44.4	144.7	64.5	132.4	85.5	185.9	117.7	117.7	22.1	101.0
Estimate:	212.2	148.0	192.3	196.1	236.0	212.5	245.3	235.9	244.8	232.7	241.6	151.0

	EU	NA/SA	LA	Asia	AF/AU	EUE	NW	SW	ME	SE	MW	IST
	56.3	196.4	194.7	590.1	287.5	189.4	5.0	186.1	360.9	254.0	528.6	396.0
Total	415.4	345.8	418.0	418.3	428.8	400.9	494.4	474.5	467.8	460.7	477.1	334.4

Last Update: April 2006
of Regions: 11.0

Workflow Primitives

Consider sequences
image states
user functions
content formats
job control
transform intent

